

Assembly Instructions

Clarity Table Lamp

- Before you begin to assemble your new piece of furniture, please check to ensure that all parts have been supplied.
- Follow instructions closely as deviation from them may void your warranty and present a possible safety risk.
- It is recommended that assembly is done on a soft surface like carpet to avoid any damage.
- If you experience any problems with your new purchase please phone Freedom Customer Service (FCS) on 1300 135 588 (Customers outside Australia should contact their closest Freedom store.)

Care Information:

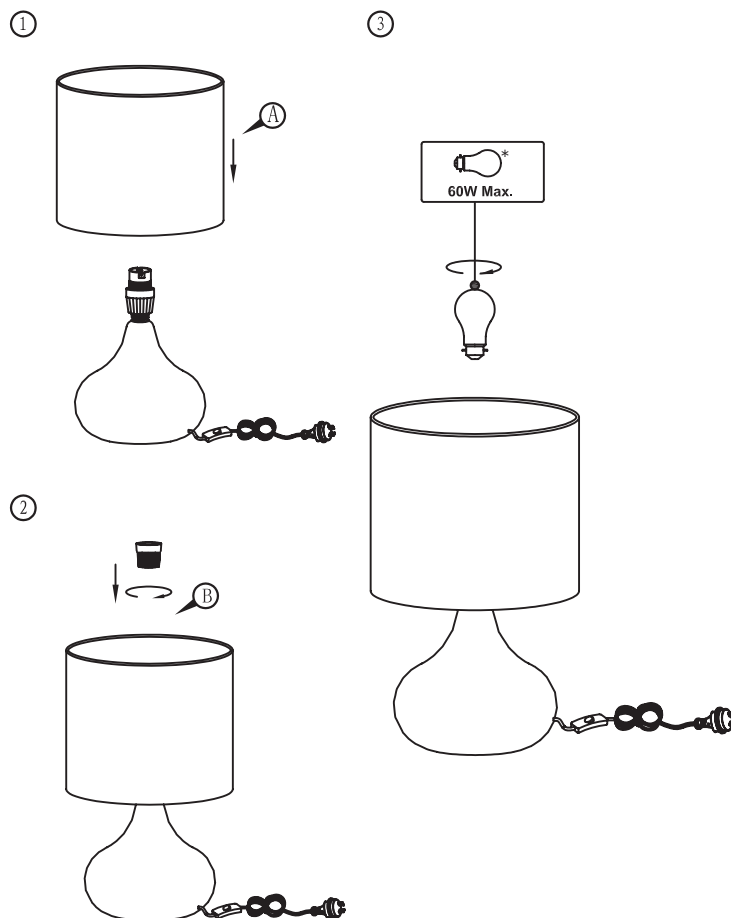
Periodically check and re-tighten all fasteners. Wipe down surfaces using a clean cloth weekly. If the external flexible cable or cord is damaged it shall be exclusively replaced by a professional.

Replacing the bulb:

Disconnect the plug from the electrical supply and allow the bulb and lamp to cool down. Replace the bulb with a B22 MAX 60W or 15W Energy Saving CFL. Re-connect the supply and turn on.

Specifications:

230-240V AC 50Hz
IP20 Indoor Use only
B22 MAX60W
Class II Protection



*bulb not included